

PS226-T12-K250



- Design to EN 50047
- cable entry 2 x M20 x 1,5
- thermoplastic enclosure with foldable latching cover
- Simple and quick to adjust the control elements by 45°.
- Quick connection technology as connection terminals rotated by 45°
- Actuation from bottom parallel to the switch, therefore only suitable for small housings.

Data

Ordering data

Product type description	PS226-T12-K250
Article number (order number)	103015089
EAN (European Article Number)	4030661501956

Certifications

Certificates	cULus CCC EAC
--------------	---------------------

General data

Product name	PS226 with angle roller lever K250
Standards	IEC 60947-5-1
Housing construction form	Norm construction design
Enclosure material	Plastic, glass-fibre-reinforced
Material of the contacts, electrical	Silver
Gross weight	89.1 g

General data - Features

Safety functions	Yes
------------------	-----

Number of auxiliary contacts	1
Number of safety contacts	2

Safety appraisal

Standards	ISO 13849-1
Mission Time	20 Year(s)

Safety appraisal - Safety outputs

B10d Normally-closed contact (NC)	20,000,000 Operations
-----------------------------------	-----------------------

Mechanical data

Actuating element	Angle roller lever K250
Mechanical life, minimum	10,000,000 Operations
Positive break force, minimum	40 N
Actuating speed, minimum	60 mm/min
Actuating speed, maximum	1 m/s

Mechanical data - Connection technique

Terminal Connector	Screw connection
Cable section, minimum	0.34 mm ²
Cable section, maximum	1.5 mm ²

Mechanical data - Dimensions

Height of sensor	107 mm
Length of sensor	33 mm
Width of sensor	59 mm

Ambient conditions

Protection class	IP66 IP67
Ambient temperature, minimum	-30 °C
Ambient temperature, maximum	+80 °C

Ambient conditions - Insulation value

Rated impulse withstand voltage	4 kV
---------------------------------	------

Electrical data

Thermal test current	5 A
Required rated short-circuit current to EN 60947-5-1	400 A
Utilisation category AC-15	240 VAC
Utilisation category AC-15	3 A

Utilisation category DC-13	24 VDC
Utilisation category DC-13	3 A
Switching element	1 NO contact, 2 NC contacts
Switching principle	Creep circuit element
Switching frequency	5,000 /h

Ordering code

Product type description:

PS2(2)-(3)-(4)-(5)-(6)-(7)-(8)-(9)-(10)-(11)-
(12)

(2)

- 5** Metal enclosure
- 216** Thermoplastic enclosure
- 226** Plastic housing with 2 cable entries

(3)

- without** L-hole (standard)
- L** elongated hole

(4)

- Z11** Snap action 1 NO contact / 1 NC contact
- Z02** Snap action 2 NC contacts
- Z12** Snap action 1 NO contact / 2 NC contact
- Z11R** Snap action 1 NO contact / 1 NC contact with latching
- Z02R** Snap action 2 NC contacts with latching
- T11** Slow action 1 NO contact / 1 NC contact
- T02** Slow action 2 NC contacts
- T20** Slow action 2 NO contact
- T12** Slow action 1 NO contact / 2 NC contact
- T21** Slow action 2 NO contact / 1 NC contact
- T03** Slow action 3 NC contacts
- T11UE** Slow action 1 NO contact / 1 NC contact with overlapping contacts
- T02H** Slow action 2 NC contacts with staggered contacts

(5)

- without** Contacts silver plated (Standard)
- A1** Gold contacts 0,3 µm
- A2** Gold contacts 1,0 µm
- A3** Gold contacts 3,0 µm

(6)

without without indication light

G integrated status display

(7)

without Cable entry M20

M16 cable entry M16

ST Connector plug M12 - plastic - bottom

STR Connector plug M12, right

STL Connector plug M 12, left

(8)

- S200** plunger S200 Ø 6 mm
- S210** Plunger Ø 8,6 mm
- S211** Plunger Ø 10,3 mm
- S221** Plunger Ø 9,8 mm
- R200** Roller plunger R200
- R201** Roller plunger - stainless steel roller Ø 9,5mm
- R210** Roller plunger - plastic roller Ø 12mm
- K201** Roller plunger - stainless steel roller - width 5,3 mm - Ø 12mm
- K200** Offset roller lever - plastic roller- width 5.3 mm - Ø 12 mm
- K201** Roller plunger - stainless steel roller - width 5,3 mm - Ø 12mm
- K210** Offset roller lever - plastic roller- width 5mm - Ø 14mm
- K230** Angle roller lever - plastic roller Ø 14 mm
- K240** Angle roller lever with plastic roller Ø 22 mm - right-bent
- K250** Angle roller lever with plastic roller Ø 22 mm - left-bent
- H200** Roller lever - plastic roller Ø 16 m - lever length 24 mm
- H202** Roller lever - brass roller Ø 16mm - lever length 24mm (Standard)
- H230** Roller lever - plastic roller Ø 16mm - lever length 28 mm
- H232** Roller lever - brass roller Ø 16mm - lever length 28 mm
- H236** Roller lever - rubber roller Ø 16mm - lever length 28 mm
- N200** Roller lever 2 mm Toothing (24...26mm) - Plastic roller Ø 20 mm - Width 9.8 mm
- N201** Roller lever adjustable in 2 mm steps (24...66mm) - stainless steel roller Ø 20mm - width 9,8 mm
- N202** Roller lever - adjustable in 2 mm steps (24...66mm) - brass roller Ø 20mm - width 9,8 mm
- N210** Roller lever - adjustable in 2 mm steps (24...66mm) - plastic roller Ø 20mm - width 5 mm - long-angled - locking washer
- N280** Roller lever -adjustable in 2 mm steps (24...66mm) - plastic roller Ø 20mm - width 5 mm - long -locking washer
- J200** Rod lever - plastic - 200mm -Ø 6mm
- J201** Rod lever - stainless steel - 200mm -Ø 6mm (Standard)
- J203** Rod lever - aluminium - 200mm -Ø 6mm
- F230** Spring rod - plastic
- F231** Spring rod - stainless steel
- A200** Special actuating bolt - plastic - valve control

(9)

without no intent rotation (Standard)

- U1** intent rotation 45°
- U2** intent rotation 90°
- U3** intent rotation 135°
- U4** intent rotation 180°
- U5** intent rotation 225°
- U6** intent rotation 275°
- U7** intent rotation 315°

(10)

without no lever rotation (Standard)

- X1** lever rotation 15°
- X2** lever rotation 30°
- X3** lever rotation 45°
- X4** lever rotation 60°
- X5** lever rotation 75°
- X6** lever rotation 90°
- X7** lever rotation 105°
- X8** lever rotation 120°
- X9** lever rotation 135°
- X10** lever rotation 150°
- X11** lever rotation 165°
- X12** lever rotation 180°
- X13** lever rotation 195°
- X14** lever rotation 210°
- X15** lever rotation 225°
- X16** lever rotation 240°
- X17** lever rotation 255°
- X18** lever rotation 270°
- X19** lever rotation 285°
- X20** lever rotation 300°
- X21** lever rotation 315°
- X22** lever rotation 330°
- X23** lever rotation 345°

(11)

without Roller outside (Standard)

- I** Roller inside

(12)

without -30...+80°C (Standard)

- T** -40...+80°C

Documents

Operating instructions (supplementary sheet/quick guide)

(552,5 kB, 10.05.2019, Revision A)

UL Certificate

(211,5 kB, 01.08.2019)

CCC certification

(3,6 MB, 10.05.2019, Revision 01)

EAC certification

SISTEMA-VDMA library

(134,9 kB, 19.06.2019)

Pictures

Product picture (catalogue individual photo)



ID: kps2kf15

| 721,0 kB | .jpg | 352.778 x 486.481 mm - 1000 x 1379 Pixel - 72 dpi

| 76,4 kB | .jpg | 27.093 x 37.338 mm - 320 x 441 Pixel - 300 dpi

| 45,7 kB | .png | 74.083 x 101.953 mm - 210 x 289 Pixel - 72 dpi

Product picture (catalogue individual photo)



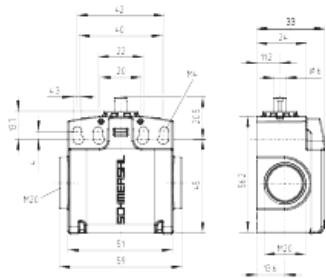
ID: kps1kf35

| 20,7 kB | .png | 74.083 x 64.206 mm - 210 x 182 Pixel - 72 dpi

| 30,2 kB | .jpg | 27.093 x 23.453 mm - 320 x 277 Pixel - 300 dpi

| 206,5 kB | .jpg | 352.778 x 305.506 mm - 1000 x 866 Pixel - 72 dpi

Dimensional drawing basic component



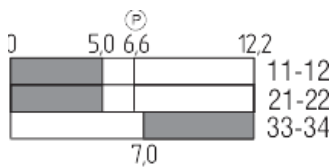
ID: kps2xg04

| 6,5 kB | .png | 74.083 x 63.853 mm - 210 x 181 Pixel
- 72 dpi

| 38,9 kB | .jpg | 112.889 x 97.367 mm - 320 x 276
Pixel - 72 dpi

| 167,8 kB | .jpg | 352.778 x 304.447 mm - 1000 x 863
Pixel - 72 dpi

Switch travel diagram

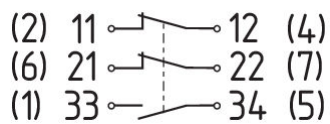


ID: kps11s52

| 2,0 kB | .png | 74.083 x 36.336 mm - 210 x 103 Pixel
- 72 dpi

| 19,2 kB | .jpg | 112.889 x 55.386 mm - 320 x 157
Pixel - 72 dpi

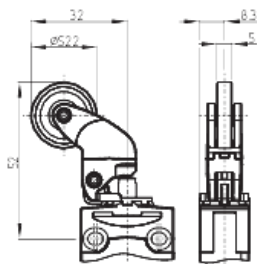
Diagram



ID: kps2xk02

| 24,0 kB | .jpg | 112.889 x 47.272 mm - 320 x 134
Pixel - 72 dpi

Dimensional drawing actuator



ID: kps11b08

| 214,1 kB | .jpg | 352.778 x 365.831 mm - 1000 x
1037 Pixel - 72 dpi

| 5,8 kB | .png | 74.083 x 72.319 mm - 210 x 205 Pixel
- 72 dpi

K.A. Schmersal GmbH & Co. KG, Möddinghofe 3, D-42279 Wuppertal

The details and data referred to have been carefully checked. Images may diverge from original. Further technical data can be found in the manual. Technical amendments and errors possible.

Generated on 23.06.2020 15:34:45