

- > Port size: 1/4" ... 3/4" (ISO G/ PTF)
- > Oil-fog option available
- > Micro-fog plug-in lubricators for best lubrication in general purpose pneumatic applications



Technical features

Medium:

Compressed air

Maximum operating pressure:

17 bar (246 psi)

Start point:

 1,5 dm³/s

Bowl size:

0,2 litre (7 fl oz) standard

1 litre (34 fl oz) optional

Ambient/Media temperature:

-20° ... +80°C (-4° ... +176°F)

Air supply must be dry enough to avoid ice formation at temperatures below +2°C (+35°F).


Materials:

Body & yoke: Zinc alloy


Sight dome: Transparent PA

Elastomers: NBR

Technical data L64C - Oil-fog lubricators; standard models

Symbol	Port size	Size	Flow * (dm ³ /s)	Bowl	Weight (kg)	Model
	G1/4	—	25	Metal	1,42	L64C-2GP-EDN
	G3/8	—	62	Metal	1,4	L64C-3GP-EDN
	G1/2	Basic	72	Metal	1,37	L64C-4GP-EDN
	G3/4	—	72	Metal	1,73	L64C-6GP-EDN
	Without yoke	—	—	Metal	0,94	L64C-NNP-EDN

Technical data L64M - Micro-fog lubricators; standard models

Symbol	Port size	Size	Flow * (dm ³ /s)	Bowl	Weight (kg)	Model
	G1/4	—	25	Metal	1,42	L64M-2GP-EDN
	G3/8	—	62	Metal	1,40	L64M-3GP-EDN
	G1/2	Basic	72	Metal	1,37	L64M-4GP-EDN
	G3/4	—	72	Metal	1,73	L64M-6GP-EDN
	Without yoke	—	—	Metal	0,94	L64M-NNP-EDN

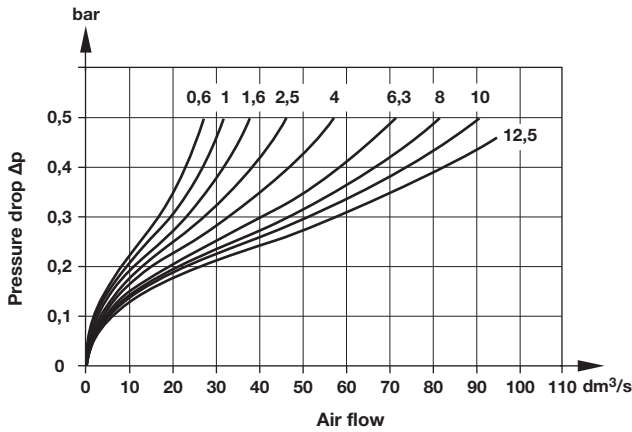
* Typical flow with 6,3 bar (91 psi) inlet pressure and 0,5 bar (7 psi) pressure drop

Option selector

Type	Substitute	L64★-★★P-E★★		Options	Substitute
Oil-fog	C	←	→	None	N
Micro-fog	M			Quick fill device	Q
Port size	Substitute	←	→	Bowl	Substitute
1/4"	2			Metal with liquid level indicator; 0,2 litre	D
3/8"	3			Long metal bowl with liquid level indicator; 1 litre	A
1/2"	4				
3/4"	6				
Without yoke	N				
Threads	Substitute	←	→		
PTF	A				
ISO G (standard)	G				
Without yoke (standard)	N				

Flow characteristics








Port size 1/2"



Accessories

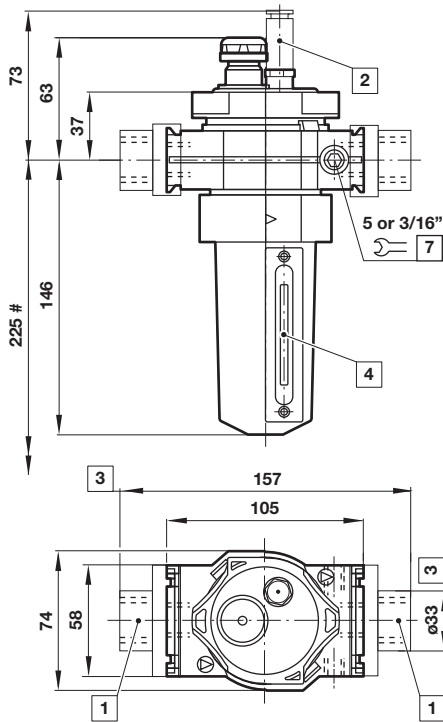
	Models with G-thread Single yoke	Double yoke	3/2 Shut-off valve Threaded inlet only	Threaded outlet only	End connector kit	Rear entry bracket kit
Thread	5				2	8
G1/4	Y64A-2GA-N1N	Y64A-2GA-N2N	T64T-2GB-P1N	T64T-2GC-P1N	—	—
G3/8	Y64A-3GA-N1N	Y64A-3GA-N2N	T64T-3GB-P1N	T64T-3GC-P1N	—	—
G1/2	Y64A-4GA-N1N	Y64A-4GA-N2N	T64T-4GB-P1N	T64T-4GC-P1N	74505-50	—
G3/4	Y64A-6GA-N1N*	Y64A-6GA-N2N*	T64T-6GB-P1N	T64T-6GC-P1N	74505-53	18-026-981
1/4 PTF	Y64A-2AA-N1N	Y64A-2AA-N2N	T64T-2AB-P1N	T64T-2AC-P1N	—	—
3/8 PTF	Y64A-3AA-N1N	Y64A-3AA-N2N	T64T-3AB-P1N	T64T-3AC-P1N	—	—
1/2 PTF	Y64A-4AA-N1N	Y64A-4AA-N2N	T64T-4AB-P1N	T64T-4AC-P1N	74505-52	—
3/4 PTF	Y64A-6AA-N1N*	Y64A-6AA-N2N*	T64T-6AB-P1N	T64T-6AC-P1N	74505-55	—

*These yokes are supplied with two end connector kits as standard.

Bracket mounting	Nut	Quick fill device	Yoke connector kit	Porting block	Adjustable pressure switch	Padlock with two keys
 1	 4		 9			
74504-50	74502-89	18-011-024	74503-51	74507-50	4346-99	0613633 (brass)

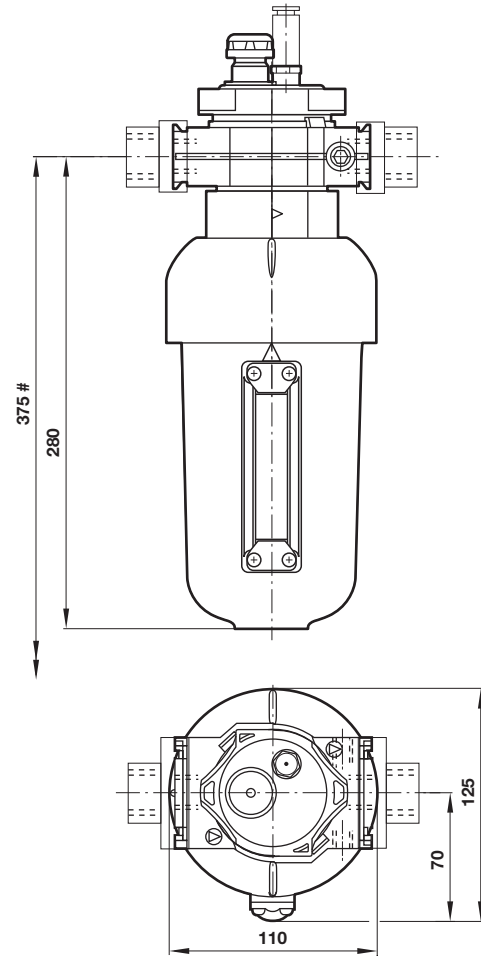
Service kit



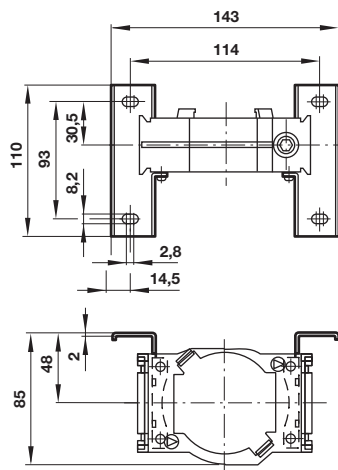
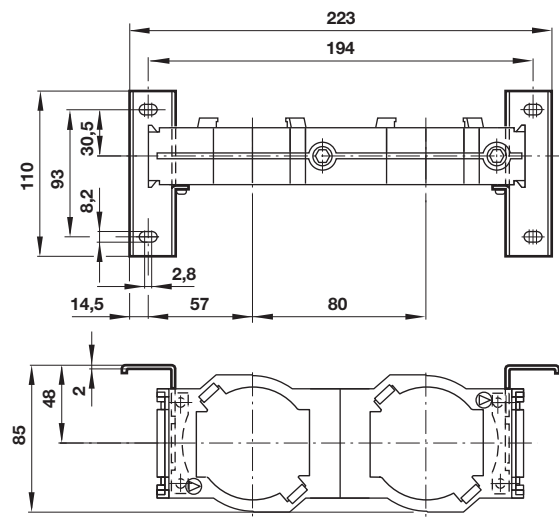
Dimensions
0,2 litre bowl


Minimum clearance required to remove bowl

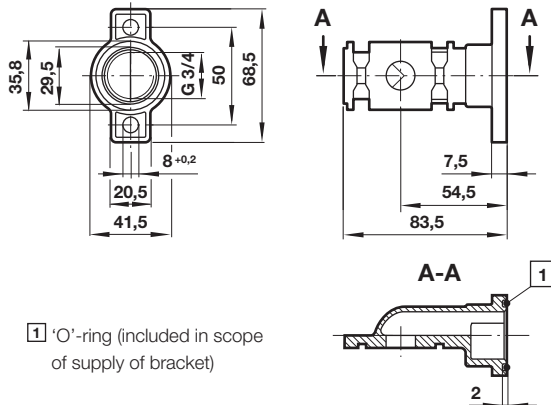
- 1 Main ports 1/4", 3/8", 1/2" or 3/4"
- 2 Quick fill device
- 3 For main ports 3/4" only
- 4 Sight glass
- 7 Gauge port 1/8"

1 litre bowl


Dimensions in mm
Projection/First angle


Single yoke with bracket mounting

Double yoke with bracket mounting


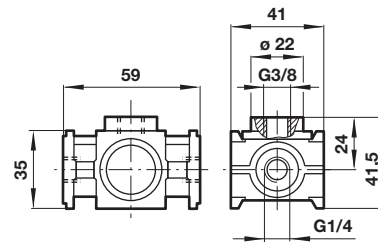
Rear entry bracket
18-026-981



1 'O'-ring (included in scope of supply of bracket)

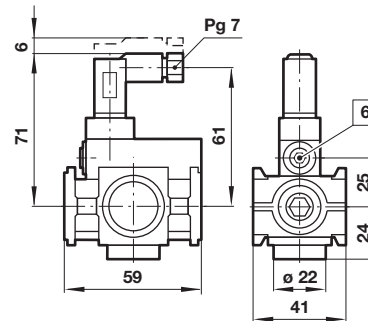
Porting block
74507-50

Dimensions in mm
Projection/First angle



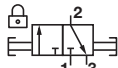
Adjustable pressure switch
4346-99

Voltage	24 V d.c./240 V a.c.
Current	0,5 A (d.c.); 5 A (a.c.)
Pressure range	2 ... 10 bar
Repeatability	2% of full set point range at 20°C
Average deadband	0,8 ... 1,7 bar
Electrical connection (corresponding to choosen coil)	EN 175301-803 - Form C, 15 mm
Degree of protection:	IP65
Adjustable	Standard
Material	Body: Aluminium, Elastomers: NBR

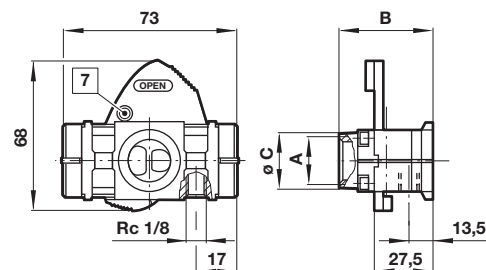


6 Adjusting screw

3/2 Shut-off valve

Symbol	A	B	ø C	Model
	G1/4	48	27	T64T-2G*-P1N
	G3/8	48	27	T64T-3G*-P1N
	G1/2	48	27	T64T-4G*-P1N
	G3/4	51	33	T64T-6G*-P1N

* B = Threaded inlet only, C = Threaded outlet only



7 Padlock hole ø7,5 mm

Warning

These products are intended for use in industrial compressed air systems only. Do not use these products where pressures and temperatures can exceed those listed under

»**Technical features/data**«.

Before using these products with fluids other than those specified, for non-industrial applications, life-support systems or other applications not within published specifications, consult IMI NORGREN.

Through misuse, age, or malfunction, components used in fluid power systems can fail in various modes.

The system designer is warned to consider the failure modes of all component parts used in fluid power systems and to provide adequate safeguards to prevent personal injury or damage to equipment in the event of such failure.

System designers must provide a warning to end users in the system instructional manual if protection against a failure mode cannot be adequately provided.

System designers and end users are cautioned to review specific warnings found in instruction sheets packed and shipped with these products.