

Approvals  
(according to type):



cUL US Certain relay/socket combinations

### Screwless terminal socket 35 mm (EN 50022) mounting

Supply voltage	Relay type	Socket type
12 V AC/DC	34.51.7.012.xx10	93.51.0.024
24 V AC/DC	34.51.7.024.xx10	93.51.0.024
(110...125)V AC/DC	34.51.7.060.xx10 or 34.81.7.060.xxxx	93.51.0.125
(220...240)V AC/DC	34.51.7.060.xx10 or 34.81.7.060.xxxx	93.51.0.240
(110...125)V AC/DC*	34.51.7.060.xx10 or 34.81.7.060.xxxx	93.51.3.125*
(220...240)V AC*	34.51.7.060.xx10 or 34.81.7.060.xxxx	93.51.3.240*
(220...240)V AC	34.51.7.060.xx10 or 34.81.7.060.xxxx	93.51.8.240
12 V DC	34.51.7.012.xx10	93.51.7.024
24 V DC	34.51.7.024.xx10 or 34.81.7.024.xxxx	93.51.7.024
60 V DC	34.51.7.060.xx10 or 34.81.7.060.xxxx	93.51.7.060

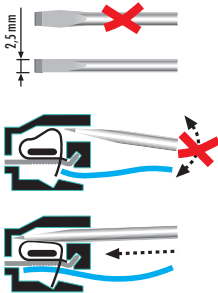
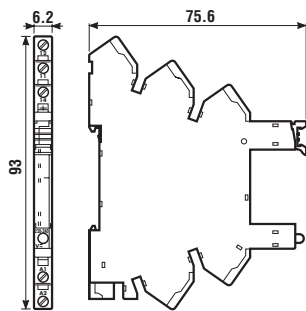
### Accessories

20-way jumper link	093.20 (see table below)
Plastic separator	093.01 (see table below)
Sheet of marker tags	093.64 (see table below)

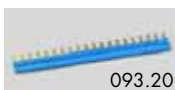
### Technical data

Rated values	6A - 250 V	
Insulation	6 kV (1.2/50 μs) between coil and contacts	
Protection category	IP 20	
Ambient temperature	(-40...+70)°C (U <sub>N</sub> ≤ 60 V), (-40...+55)°C (U <sub>N</sub> ≥ 60 V)	
Wire strip length	mm	10
Max. wire size for 93.51 socket	solid wire	
	mm <sup>2</sup>	1x2.5
	AWG	1x14
	stranded wire	1x2.5
		1x14

\* Leakage current suppression.



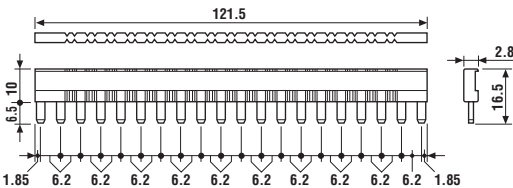
## Accessories



Approvals  
(according to type):



<b>20-way jumper link</b> for 93.01 and 93.51 sockets	093.20 (blue)	093.20.0 (black)
Rated values	36 A - 250 V	



<b>Plastic separator</b> for 93.01 and 93.51 sockets	093.01
--	--------

Thickness 2 mm, required at the start and the end of a group of interfaces.

Can be used for visual separation of groups. Must be used for:

- protective separation of different voltages of neighbouring PLC interfaces according to VDE 0106-101
- protection of cut jumper links



<b>Sheet of marker tags</b> , plastic, 64 tags, 6x10 mm for 93.01 and 93.51 sockets	093.64
---	--------



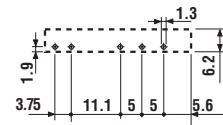
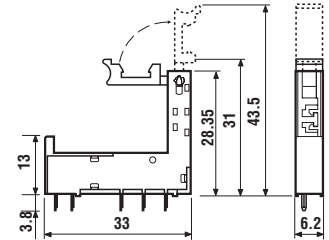
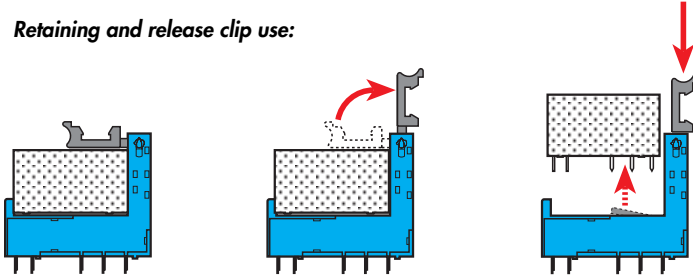
93.11

Approvals  
(according to type):



<b>PCB socket with retaining and release clip</b>	<b>93.11 (blue)</b>
For relay type	34.51, 34.81
<b>Technical data</b>	
Rated values	6 A - 250 V
Insulation	$\geq 6$ kV (1.2/50 $\mu$ s) between coil and contacts
Protection category	IP 20
Ambient temperature	$^{\circ}\text{C}$ -40...+70

**Retaining and release clip use:**



Copper side view

