

### FEATURES

- Flat faced design
- Plated steel
- Compliant with ISO Standard 16028
- Extra security locking
- Dust caps are available to further protect against environmental and system contamination
- Push-pull version for panel mounting is available

### BENEFITS

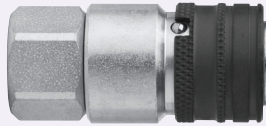
- Minimises spillage during connection and disconnection
- Fast, easy, one hand operation
- Strong and durable for tough applications
- Protection against involuntary disconnection

### Double Shut Off



SPECIFICATIONS	165	265	365	565	665	765
Nominal flow diameter	5.0 mm (3/16")	6.3 mm (1/4")	10 mm (3/8")	12.5 mm (1/2")	16 mm (5/8")	19 mm (3/4")
Flow capacity	3.6 l/min (0.8 GPM UK)	12 l/min (2.6 GPM UK)	23 l/min (5.1 GPM UK)	45 l/min (9.9 GPM UK)	74 l/min (16.3 GPM UK)	100 l/min (22.0 GPM UK)
Max. working pressure connected	720 bar	500 bar	400 bar	400 bar	400 bar	400 bar
Max. working pressure disconnected	720 bar	500 bar	400 bar	400 bar	400 bar	400 bar
Min. burst pressure connected	1800 bar	1500 bar	1200 bar	1200 bar	1200 bar	1200 bar
Min. burst pressure disconnected	1800 bar	1500 bar	1200 bar	1200 bar	1200 bar	1200 bar
Temperature range	-30°C to +100°C (-22°F to +212°F)					
Coupling material	Steel, zinc passivated					
Nipple material	Hardened steel, zinc passivated					
Seal material	Standard Nitrile (NBR)					
Connectability	Without pressure					
Disconnection under pressure	Not allowed					

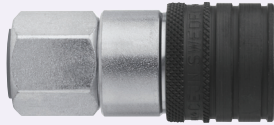
## COUPLINGS



**CEJN X65 – SERIES 165  
FEMALE THREAD**

155

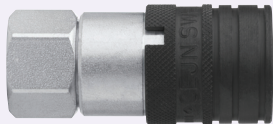
PART NUMBER	CONNECTION
C101651201	1/8" BSPP



**CEJN X65 – SERIES 265  
FEMALE THREAD**

155

PART NUMBER	CONNECTION
C102651102	1/4" BSPT
C102651202	1/4" BSPP
C102651212	1/4" BSPP
C102651402	1/4" NPT
C102651602	7/16" – 20 UNF

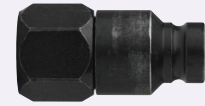


**CEJN X65 – SERIES 365  
FEMALE THREAD**

155

PART NUMBER	CONNECTION
C103651104	3/8" BSPT
C103651204	3/8" BSPP
C103651214	3/8" BSPP
C103651205	1/2" BSPP
C103651215	1/2" BSPP
C103651404	3/8" NPT
C103651604	9/16" – 18 UNF

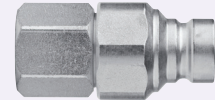
## NIPPLES



**CEJN X65 – SERIES 165  
FEMALE THREAD**

155

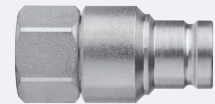
PART NUMBER	CONNECTION
C101656201	1/8" BSPP



**CEJN X65 – SERIES 265  
FEMALE THREAD**

155

PART NUMBER	CONNECTION
C102656102	1/4" BSPT
C102656202	1/4" BSPP
C102656212	1/4" BSPP
C102656402	1/4" NPT
C102656602	7/16" – 20 UNF



**CEJN X65 – SERIES 365  
FEMALE THREAD**

155

PART NUMBER	CONNECTION
C103656104	3/8" BSPT
C103656204	3/8" BSPP
C103656214	3/8" BSPP
C103656205	1/2" BSPP
C103656215	1/2" BSPP
C103656404	3/8" NPT
C103656604	9/16" – 18 UNF