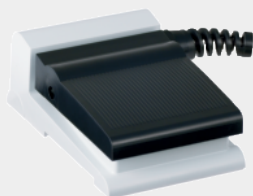


NKF1-10Z-B-2M



- 1 Contact
- single-pedal types
- Compact, flat design
- Design single-pedal types
- with Pre-wired cable, 2 m
- Modern and symmetric design
- Contact versions consisting of switch-over or NO contacts

Data

Ordering data

Product type description	NKF1-10Z-B-2M
Article number (order number)	103003077
EAN (European Article Number)	4030661427805
eCl@ss number, Version 9.0	27-37-12-18

General data

Product name	NKF1
Standards	IEC/EN 60947-5-1
Enclosure material	shock-proof thermoplastic
Material of the pedal	ABS thermoplastic
Colour of the housing	RAL 9006 (White aluminum)
RAL colour of the pedal	9005
Colour of the pedal	Black
Gross weight	441 g

General data - Features

Number of shutters	1
--------------------	---

Mechanical data

Mechanical life, minimum	1,000,000 Operations
--------------------------	----------------------

Mechanical data - Connection technique

Terminal Connector	Pre-wired cable
Length of cable	2 m

Mechanical data - Dimensions

Width	77 mm
Height	49 mm
Depth	123 mm

Ambient conditions

Protection class	IP 67 to IEC/EN 60529
Ambient temperature, minimum	-25 °C
Ambient temperature, maximum	+60 °C

Electrical data

Utilisation category AC-15	230 VAC
Utilisation category AC-15	2.5 A
Utilisation category DC-13	24 VDC
Utilisation category DC-13	1 A
Switching element	Normally open contact (NO)
Switching principle	Snap switch element

Documents

Operating instructions and Declaration of conformity

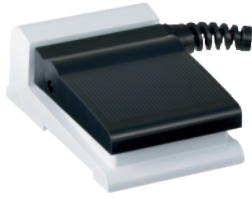
(549,7 kB, 10.05.2019, Revision C)

Brochure

(628,1 kB, 10.05.2019, Revision 01)

Pictures

Product picture (catalogue individual photo)



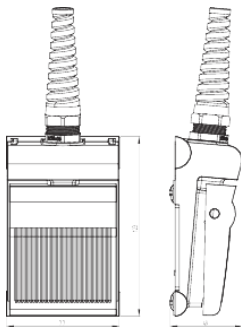
ID: ktf--f02

| 35,4 kB | .png | 74.083 x 87.489 mm - 210 x 248
Pixel - 72 dpi

| 52,7 kB | .jpg | 23.223 x 27.432 mm - 320 x 378 Pixel
- 350 dpi

| 378,8 kB | .jpg | 352.778 x 416.983 mm - 1000 x
1182 Pixel - 72 dpi

Dimensional drawing basic component



ID: knkf1g01

| 8,7 kB | .png | 73.731 x 100.189 mm - 209 x 284
Pixel - 72 dpi

| 55,4 kB | .jpg | 112.889 x 153.106 mm - 320 x 434
Pixel - 72 dpi

| 292,3 kB | .jpg | 352.778 x 478.367 mm - 1000 x
1356 Pixel - 72 dpi

K.A. Schmersal GmbH & Co. KG, Möddinghofe 3, D-42279 Wuppertal

The details and data referred to have been carefully checked. Images may diverge from original. Further technical data can be found in the manual. Technical amendments and errors possible.

Generated on 23.06.2020 12:41:07