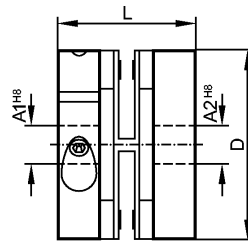


**E60118**

SPRING COUPLING 30-10-10-22

**Accessories**



Made in Germany

**Product characteristics**

Spring disc coupling electrically isolating

Ø 10 mm / Ø 10 mm

**Mechanical data**

Dimension [mm]	D: 30 A1: 10 A2: 10 L: 22
Displacement	max. radial displacement: ± 0.3 mm max. angular displacement: ± 2.5 ° max. axial displacement: ± 0.4 mm
Max. permissible rpm [1/min]	12000
Max. torque [Ncm]	60
Rigidity of the torsion spring [Nm/rad]	50
Housing materials	diecast zinc; PA
Max. torque clamping screws [Ncm]	100
Weight [kg]	0.03

**Remarks**

Remarks	The data indicated apply to couplings with the above hub borings at an ambient temperature of 23 °C. The values of radial, angular and axial displacement are maximum values which must not reach their maximum simultaneously while in operation.
---------	---

Pack quantity [piece]	1
-----------------------	---