

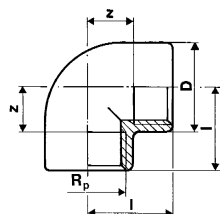
# Pipe Fittings threaded in PVC-U

## 21 10 16

### Elbows 90°



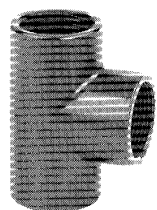
with BSP parallel female thread (Rp)  
 Connection to plastic thread only  
 Do not use thread sealing pastes that are harmful to PVC-U



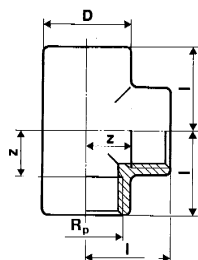
Rp	PN	Code	£	SP	GP	g	z	D	l
3/8"	10	721.101.605		10	100	15	9	23	23
1/2"	10	721.101.606		10	100	21	12	26.5	27
3/4"	10	721.101.607		10	100	32	15	32.5	33
1"	10	721.101.608		10	100	52	19	39	39
1 1/4"	10	721.101.609		10	50	85	27	48	49
1 1/2"	10	721.101.610		5	50	197	35	60.5	59
2"	10	721.101.611		5	5	260	44	75	72
2 1/2"	10	721.101.612		5	5	398	56	90	84
3"	10	721.101.613		5	5	670	68	108	99
4"	10	721.101.614		1	1	1156	82	132	119

## 21 20 16

### Tees 90°, equal



with BSP parallel female thread (Rp)  
 Connection to plastic thread only  
 Do not use thread sealing pastes that are harmful to PVC-U



Rp	PN	Code	£	SP	GP	g	z	D	l
3/8"	10	721.201.605		10	100	21	9	23	23
1/2"	10	721.201.606		10	100	31	12	27.5	27
3/4"	10	721.201.607		10	50	46	15	33	33
1"	10	721.201.608		10	50	80	19	41	39
1 1/4"	10	721.201.609		10	10	130	27	50	49
1 1/2"	10	721.201.610		10	10	283	35.5	62	59.5
2"	10	721.201.611		10	10	510	44	77	72
2 1/2"	10	721.201.612		5	5	578	56	91.5	84
3"	10	721.201.613		5	5	964	68	109.5	99
4"	10	721.201.614		1	1	1690	82	132.5	119

## 21 91 06

### Sockets

with BSP parallel female thread (Rp)  
 Connection to plastic thread only  
 Do not use thread sealing pastes that are harmful to PVC-U

Rp	PN	Code	£	SP	GP	g	z	l	s
1/4"	10	721.910.604				11	7	27	22
3/8"	10	721.910.605				16	7	29	27
1/2"	10	721.910.606				25	9	35	32
3/4"	10	721.910.607				27	9	39	36
1"	10	721.910.608				54	11	45	46
1 1/4"	10	721.910.609				78	11	49	55
1 1/2"	10	721.910.610				105	11	49	65
2"	10	721.910.611				175	11	57	80