

## TFH232-11

- 2 Contacts
- Metal enclosure
- single-pedal types
- Cable entry M 20 x 1.5
- High level of stability
- Low operating height of pedal
- Protective shield with wide opening
- Also available as safety foot switch

## Data

### Certifications

Certificates	cULus CCC EAC
--------------	---------------------

### General data

Product name	F 232
Standards	EN 60947-5-1 DIN VDE 0660-200 BG-GS-ET-15
Enclosure material	Aluminium
Enclosure coating material	powder-coated
Material of the cover	Aluminium
Material of the pedal	Glass-fibre, reinforced thermoplastic
Material of the protective shield	Aluminium
Colour of the housing	RAL 9006 (White aluminum)
Gross weight	1630.000 g

### General data - Features

Protective shield	Yes
Probing possible	Yes
Number of openers	1
Number of shutters	1

## Mechanical data

Mechanical life, minimum 1,000,000 Operations

## Mechanical data - Connection technique

Terminal Connector Screw connection

Cable section, maximum 1 x 2.5 mm<sup>2</sup>

Note (Cable section) All indications about the cable section are including the conductor ferrules.

## Mechanical data - Dimensions

Width 170 mm

Height 189 mm

Depth 274 mm

## Ambient conditions

Protection class IP 65 to IEC/EN 60529

Ambient temperature, minimum -25 °C

Ambient temperature, maximum +70 °C

## Ambient conditions - Insulation value

Rated impulse withstand voltage 6 kV

## Electrical data

Thermal test current 10 A

Utilisation category AC-15 230 VAC

Utilisation category AC-15 4 A

Utilisation category DC-13 24 VDC

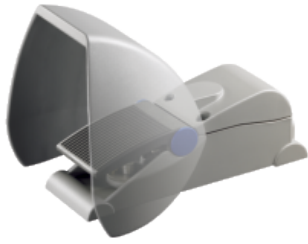
Utilisation category DC-13 1 A

Switching element NO contact, NC contact

Switching principle Slow action

## Pictures

## Product picture (catalogue individual photo)

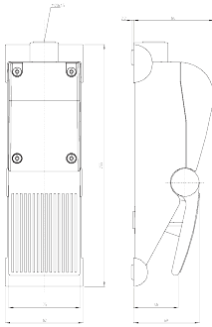


ID: ktfh-f01

| 337,6 kB | .jpg | 352.778 x 277.283 mm - 1000 x 786  
Pixel - 72 dpi

| 30,0 kB | .png | 74.083 x 58.208 mm - 210 x 165  
Pixel - 72 dpi

## Dimensional drawing basic component



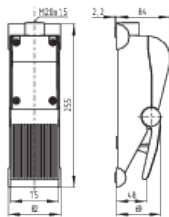
ID: ktf--g01

| 31,9 kB | .cdr |

| 5,5 kB | .png | 74.083 x 114.3 mm - 210 x 324 Pixel -  
72 dpi

| 200,6 kB | .jpg | 352.425 x 544.689 mm - 999 x 1544  
Pixel - 72 dpi

## Dimensional drawing basic component



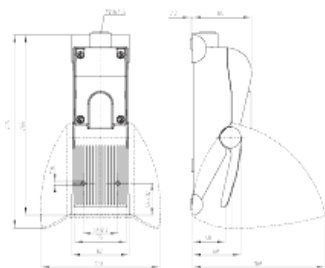
ID: 1tf--g01

| 89,6 kB | .jpg | 352.778 x 245.181 mm - 1000 x 695  
Pixel - 72 dpi

| 33,0 kB | .cdr |

| 7,6 kB | .png | 74.083 x 51.506 mm - 210 x 146 Pixel  
- 72 dpi

## Dimensional drawing basic component



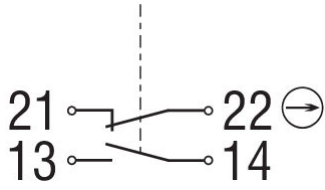
ID: 5tfh-g01

| 145,0 kB | .jpg | 352.778 x 285.044 mm - 1000 x 808  
Pixel - 72 dpi

| 5,1 kB | .png | 74.083 x 59.972 mm - 210 x 170 Pixel  
- 72 dpi

| 42,1 kB | .cdr |

## Diagram



ID: ktf--k01

| 16,0 kB | .cdr |

K.A. Schmersal GmbH & Co. KG, Möddinghofe 3, D-42279 Wuppertal

The details and data referred to have been carefully checked. Images may diverge from original. Further technical data can be found in the manual. Technical amendments and errors possible.

Generated on 26.08.2020 12:53:50