

NDLGB

Data

Ordering data

Product type description	NDLGB
Article number (order number)	101163545
EAN (European Article Number)	4250116200467
eCl@ss number, Version 9.0	27-37-12-10

Certifications

Certificates	cULus IPA
--------------	--------------

General data

Product name	NDL - Illuminated pushbutton
Standards	EN 60947-5-1 IEC/EN 60947-1
Versions	Embeddable button - Front plate mounting Round
Sealing type	Membrane Lip gaskets
Material of the operators	ABS
Material of the front ring	ABS, chrome-plated
Colour of the operating element	Yellow
Colour of the front ring	Silver
Colour of the bellows	White
Gross weight	30 g

General data - Features

Illuminable	Yes
Mounting flange	Yes
Probing possible	Yes
Fully insulated	Yes

Mechanical data

Unlocking	without
Mounting	Mounting flange ELM
Actuating stroke	5 mm
Tightening torque of the screw	0.6 Nm

Mechanical data - Dimensions

Height	28 mm
Diameter total	44.5 mm
Diameter of touch surface	27 mm
Diameter of the front ring	44.5 mm
Diameter hole	22.3 mm
Diameter hole, with tolerance indication	22.3 + 0.4 mm
Thickness, of the front panel, minimum	1.5 mm
Thickness of the front panel, maximum	6 mm
Spacing	50 x 50 mm

Ambient conditions

Protection class	IP67 IP69K
Ambient temperature, minimum	-25 °C
Ambient temperature, maximum	+80 °C

Documents

Operating instructions and Declaration of conformity

(1,3 MB, 10.05.2019, Revision B)

BG-test certificate

(286,7 kB, 28.04.2020)

UL Certificate

(413,7 kB, 01.08.2019)

IPA Data

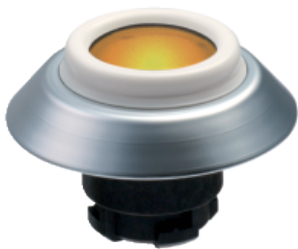
(242,8 kB, 10.05.2019, Revision A)

Brochure

(8,7 MB, 10.05.2019, Revision 03)

Pictures

Product picture (catalogue individual photo)



ID: kndl-f09

| 358,8 kB | .jpg | 352.778 x 316.794 mm - 1000 x 898
Pixel - 72 dpi

| 35,5 kB | .png | 74.083 x 66.322 mm - 210 x 188
Pixel - 72 dpi

| 53,7 kB | .jpg | 23.223 x 20.828 mm - 320 x 287 Pixel
- 350 dpi

System components

Light terminal block ELD



101166026 ELDE.NWS230

- Screw connection
- Mounting flange position 3
- white LED
- 230 VAC



101166000 ELDE.NWS24

- Screw connection
- Mounting flange position 3
- white LED
- 24 VAC/DC



101166024 ELDE.NGB230

- Screw connection
- Mounting flange position 3
- yellow LED
- 230 VAC



101167522 ELDE.NGB48

- Screw connection
- Mounting flange position 3
- yellow LED
- 48 VAC



101165998 ELDE.NGB24

- Screw connection
- Mounting flange position 3
- yellow LED
- 24 VAC/DC



101167385 ELDEKWS24

- Cage clamps
- Mounting flange position 3
- white LED
- 24 VAC/DC



101167382 ELDEKGB24

- Cage clamps
- Mounting flange position 3
- yellow LED
- 24 VAC/DC

Contact element EF - (N)



101006585 EF303S.2

- Screw connection
- Mounting flange position 2
- 31-32; 43-44 (Contact labelling)



101006584 EF303S.1

- Screw connection
- Mounting flange position 1
- 11-12; 23-24 (Contact labelling)



101022138 EF303.2

- Screw connection
- Mounting flange position 2
- 31-32; 43-44 (Contact labelling)
- Suitable for EMERGENCY-OFF



101022137 EF303.1

- Screw connection
- Mounting flange position 1
- 11-12; 23-24 (Contact labelling)
- Suitable for EMERGENCY-OFF



101006551 EF301.2

- Screw connection
- Mounting flange position 2
- 31-32; 43-44 (Contact labelling)



101006550 EF301.1

- Screw connection
- Mounting flange position 1
- 11-12; 23-24 (Contact labelling)



101006548 EF103.2

- Screw connection
- Mounting flange position 2
- 31-32; 43-44 (Contact labelling)



101006547 EF103.1

- Screw connection
- Mounting flange position 1
- 11-12; 23-24 (Contact labelling)



101006545 EF033.2

- Screw connection
- Mounting flange position 2
- 33-34; 43-44 (Contact labelling)
- Suitable for EMERGENCY-OFF



101006544 EF033.1

- Screw connection
- Mounting flange position 1
- 13-14; 23-24 (Contact labelling)
- Suitable for EMERGENCY-OFF



101024262 EF220.2

- Screw connection
- Mounting flange position 2
- 31-32; 41-42 (Contact labelling)
- Suitable for EMERGENCY-OFF



101023927 EF220.1

- Screw connection
- Mounting flange position 1
- 11-12; 21-22 (Contact labelling)
- Suitable for EMERGENCY-OFF



101006542 EF110.2

- Screw connection
- Mounting flange position 2
- 31-32; 41-42 (Contact labelling)



101006541 EF110.1

- Screw connection
- Mounting flange position 1
- 11-12; 21-22 (Contact labelling)



101006539 EF03.2

- Screw connection
- Mounting flange position 2
- 23-24 (Contact labelling)



101006538 EF03.1

- Screw connection
- Mounting flange position 1
- 13-14 (Contact labelling)



101006536 EF10.2

- Screw connection
- Mounting flange position 2
- 21-22 (Contact labelling)



101006535 EF10.1

- Screw connection
- Mounting flange position 1
- 11-12 (Contact labelling)



101026058 EFK30.2

- Cage clamps
- Mounting flange position 2
- 21-22 (Contact labelling)
- Suitable for EMERGENCY-OFF



101026057 EFK30.1

- Cage clamps
- Mounting flange position 1
- 11-12 (Contact labelling)
- Suitable for EMERGENCY-OFF



101022276 EFK10.2

- Cage clamps
- Mounting flange position 2
- 21-22 (Contact labelling)



101022275 EFK10.1

- Cage clamps
- Mounting flange position 1
- 11-12 (Contact labelling)



101022273 EFK03.2

- Cage clamps
- Mounting flange position 2
- 23-24 (Contact labelling)
- Suitable for EMERGENCY-OFF



101022272 EFK03.1

- Cage clamps
- Mounting flange position 1
- 13-14 (Contact labelling)

K.A. Schmersal GmbH & Co. KG, Möddinghofe 3, D-42279 Wuppertal

The details and data referred to have been carefully checked. Images may diverge from original. Further technical data can be found in the manual. Technical amendments and errors possible.

Generated on 23.06.2020 09:11:50