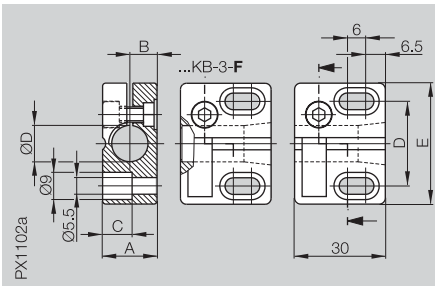


**Mounting clamp without positive stop for sensors Ø 3 mm to M8**

	Ø D			
BES 03,0-KB-3	3			
BES 04,0-KB-3	4			
BES 05,0-KB-3	5			
BES 06,5-KB-3	6.5			
BES 08,0-KB-3	8			

**Mounting clamp with positive stop for sensors Ø 3 mm to M8**

BES 08,0-KB-3-F	8			
-----------------	---	--	--	--

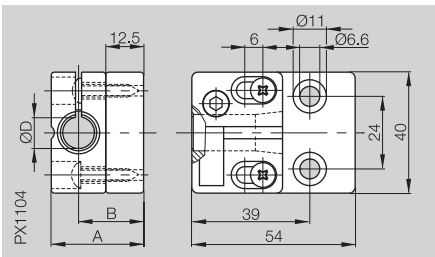


**Mounting clamp without positive stop for sensors M12 or M18 non-flush**

	Ø D	A	B	C	D	E
BES 12,0-KB-3	12	18	9	9.7	28	40
BES 18,0-KB-3	18	24	12	13.5	28	40

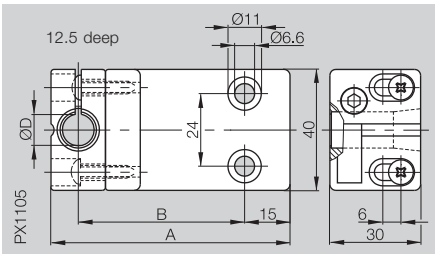
**Mounting clamp with positive stop for sensors M12, M18 or M30 flush**

BES 12,0-KB-3-F	12	18	9	9.7	28	40
BES 18,0-KB-3-F	18	24	12	13.5	28	40
BES 30,0-KB-3-F	30	36	18	19.5	42	54



**Mounting clamp with positive stop for vertical insertion of sensors for M12 or M18 flush, with mounting plate**

	Ø D	A	B
BES 12,0-KB-3-F-SA 1	12	30.5	21.5
BES 18,0-KB-3-F-SA 1	18	36.5	24.5



**Mounting clamp with positive stop for horizontal insertion of sensors for M12 or M18 flush, with mounting plate**

	Ø D	A	B
BES 12,0-KB-3-F-SA 2	12	79	55
BES 18,0-KB-3-F-SA 2	18	85	58

These mounting clamps made of PA 6 are ideal for on-location installation of sensors in the handling industry.

