

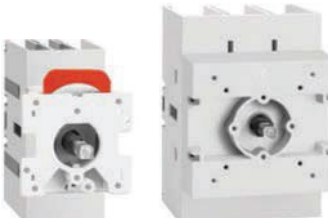
### Three-pole switch disconnectors



GA016 A...  
GA040 A  
GA063 SA

GA030 A  
GA063 A...  
GA160 A

**new**



GA016 C...  
GA040 C

GA030 C  
GA063 C...  
GA125 C

**new**

Order code	IEC conventional free air thermal current Ith AC21A (≤690V)	IEC rated operational current Ie AC22A (≤690V) AC23A (≤415V)	Qty per pkg	Wt
	[A]	[A]	n°	[kg]

Direct operating version, complete with black handle.  
For door coupling version, separately purchase the handle and shaft extension (see page 11-12 and 11-14).  
According to UL60947-4-1.

GA016 A	16	16	1	0.146
GA025 A	25	25	1	0.146
GA032 A	32	32	1	0.146
GA040 A	40	40	1	0.146
GA063 SA	63	45	1	0.148

According to UL98.

GA030 A	30	30	1	0.388
GA063 A	63	63	1	0.388
GA080 A	80	80	1	0.388
GA100 A	100	100	1	0.388
GA125 A	125	125	1	0.388

According to IEC.

GA160 A	160	125	1	0.388
---------	-----	-----	---	-------

Door mount version, complete with shaft extension (purchase handle separately, see page 11-12).  
According to UL60947-4-1.

GA016 C	16	16	1	0.170
GA025 C	25	25	1	0.170
GA032 C	32	32	1	0.170
GA040 C	40	40	1	0.170

According to UL98.

GA030 C	30	30	1	0.404
GA063 C	63	63	1	0.404
GA080 C	80	80	1	0.404
GA100 C	100	100	1	0.404
GA125 C	125	125	1	0.404

Order code	IEC conventional free air thermal current Ith AC21A (≤690V)	IEC rated operational current Ie AC22A (≤690V) AC23A (≤415V)	Qty per pack	Wt
	[A]	[A]	n°	[kg]

Simultaneous closing operation as switch disconnector poles. For GA...A version.

GAX42 040A <sup>①</sup>	40	40	1	0.045
GAX42 063SA <sup>②</sup>	63	45	1	0.045
GAX42 063A <sup>③</sup>	63	63	1	0.126
GAX42 080A	80	80	1	0.126
GAX42 100A	100	100	1	0.126
GAX42 125A	125	125	1	0.126
GAX42 160A	160	125	1	0.126

For GA...C version.

GAX42 040C <sup>④</sup>	40	40	1	0.045
GAX42 063C <sup>⑤</sup>	63	63	1	0.128
GAX42 080C	80	80	1	0.128
GAX42 100C	100	100	1	0.128
GAX42 125C	125	125	1	0.128

Early make closing operation with respect to switch disconnector poles. For GA...A version.

GAX41 040A <sup>⑥</sup>	40	40	1	0.046
GAX41 063SA <sup>⑦</sup>	63	45	1	0.046
GAX41 125A <sup>⑧</sup>	125	125	1	0.116

For GA...C version.

GAX41 040C <sup>⑨</sup>	40	40	1	0.046
GAX41 125C <sup>⑩</sup>	125	125	1	0.128

### General characteristics

- 16A to 160A
- Available versions:
  - Direct operating
  - Door mount
  - Door coupling. Use switch disconnector with direct operating handle and separately purchase the handle and shaft extension for this version. See pages 11-12 and 14.
- Compact and modular size
- Screw or 35mm DIN rail fixing
- Padlockable in 0 position with no extra accessory.

### Operational characteristics

- Rated insulation voltage Ui: 1000V
- Rated impulse withstand Uimp: 8kV
- Electrical life in AC21A:
  - 100,000 cycles GA016...GA040, GAX...40A/C
  - 15,000 cycles GA063 SA, GAX...063SA
  - 30,000 cycles GA030 and GA063...GA125, GAX...063...125A/C
  - 1,500 cycles GA160A, GAX42 160A
- Mechanical life:
  - 100,000 cycles GA016...GA040 A/C, GA063 SA, GAX...40A/C, GAX...063SA
  - 30,000 cycles GA030 and GA063...GA160A, GAX...063...125A/C, GAX42 160A.

### Certifications and compliance

Certifications obtained:

Type	cULus according to UL60947-4-1 / CSA C22.2 n°60947-4-1	cULus according to UL98 / CSA C22.2 n°4	EAC	KEMA
GA016 A...GA040 A	●	—	●	●
GA063 SA	●	—	●	—
GA016 C...GA040 C	●	—	●	●
GA030 A and GA063 A...GA125 A	—	●	●	—
GA160 A-GAX42 160A	—	—	●	—
GA030 C and GA063 C...GA125 C	—	●	●	—
GAX41 040A-GAX42 040A	●	—	●	—
GAX41 063SA-GAX42 063SA	●	—	●	—
GAX41 040C-GAX42 040C	●	—	●	—
GAX41 125A-GAX42 125C	—	●	●	—
GAX42 063A...GAX42 125A	—	●	●	—
GAX42 063C...GAX42 125C	—	●	●	—

● Certification obtained.

Compliant with standards: IEC/EN 60947-3, IEC/EN 60947-1, UL60947-4-1, UL98, CSA C22.2.

### Strokes of GA poles (main poles and add-on pole)

	Travel 0 → 1	0°	30°	60°	90°
GA016A/C...GA040A/C - GA063SA Main poles				60°	
GAX42040A/C - GAX42063SA Simultaneous closing fourth-pole add on				60°	
GAX41040A/C - GAX41063SA Early-make fourth-pole add on				55°	
GA063A/C...GA125A/C, GA160A Main poles				55°	
GAX42063A/C...GAX42125A/C, GAX42160A Simultaneous closing fourth-pole add on				55°	
GAX41125A/C Early-make fourth-pole add on				48°	
	OFF				ON

### Fourth pole add-on



GAX42...A  
GAX41...A  
GAX42 063SA  
GAX41 063SA



GAX42 040C  
GAX41 040C

- ① For GA016 A...GA040 A only.
- ② For GA063 SA only.
- ③ For GA016 C...GA040 C only.
- ④ For GA030 A and GA063 A...GA125 A only.
- ⑤ For GA030 C and GA063 C...GA125 C only.
- ⑥ For GA030 A and GA063 A only.
- ⑦ For GA030 C and GA063 C only.

# 11 Switch disconnectors

GA series 16A to 160A  
Accessories

## Add-on blocks



GAX10 11A

GAX10 11C



GAX11 10EA  
GAX12 10EA



GAX3...A



GAX3...C



GAX50...  
GAX60...

Order code	Characteristics	Qty per pack	Wt
		n°	[kg]

Auxiliary contacts, simultaneous closing as poles of switch disconnector.

<b>GAX10 11A</b>	1NO + 1NC for GA...A, GA063 SA and GA040 D	1	0.030
<b>GAX10 11C</b>	1NO + 1NC for GA...C	1	0.030

Auxiliary contacts, early-break operation with respect to poles of switch disconnector.

<b>GAX11 10EA</b>	1EB(NO) for GA016 A...GA040 A, GA063 SA and GA040 D	1	0.035
<b>GAX12 10EA</b>	1EB(NO) for GA030 A and GA063 A...GA160 A	1	0.035

Neutral terminal.

<b>GAX31 A</b>	For GA016 A...GA040 A, GA063 SA and GA040 D	1	0.040
<b>GAX32 A</b>	For GA030 A and GA063 A...GA160 A	1	0.110
<b>GAX31 C</b>	For GA016 C...GA040 C	1	0.040
<b>GAX32 C</b>	For GA030 C and GA063 C...GA125 C	1	0.110

Earth/Ground terminal.

<b>GAX33 A</b>	For GA016 A...GA040 A, GA063 SA and GA...D	1	0.040
<b>GAX34 A</b>	For GA030 A and GA063 A...GA160 A	1	0.110
<b>GAX33 C</b>	For GA016 C...GA040 C	1	0.040
<b>GAX34 C</b>	For GA030 C and GA063 C...GA125 C	1	0.110

Mechanical interlock for line changeover (I-O-II).

<b>GAX50 00</b>	For GA016 A...GA040 A, GA063 SA, GA040 D and GAX67 B; □ 5mm/0.2" ❶	1	0.050
<b>GAX50 01</b>	For GA030 A, GA063 A...GA160 A and GAX67 B; □ 5mm/0.2" ❶	1	0.075

Mechanical coupling system for 6-8 pole switch disconnectors.

<b>GAX60 00</b>	For GA016 A...GA040 A, GA063 SA and GA040 D; □ 5mm/0.2" ❶	1	0.050
<b>GAX60 01</b>	For GA030 A and GA063 A...GA125 A, □ 7mm/0.3" ❷❸	1	0.075

- ❶ Use GAX7... shaft extensions.
- ❷ Use GAX66... handles and GAX7...A extensions for a door coupling version.
- ❸ Cannot be used with GA160A.

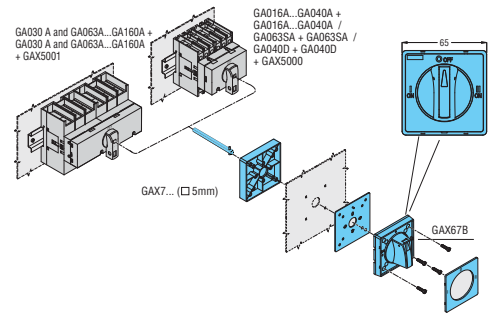
## Operational characteristics of auxiliary contacts

- Conventional free air thermal current I<sub>th</sub>: 10A
- UL/CSA and IEC/EN 60947-5-1 designation: A600-Q600
- Tightening torque: 0.8Nm/7.1lbin.

## Operational characteristics for other devices

- Tightening torque:
  - GAX31A/C-GAX33A/C terminals: 1.8...2Nm/16...18lbin
  - GAX32A/C-GAX34A/C terminals: 5...6Nm/45...54lbin
  - GAX5000/1-GAX6000/1 fixing: 0.5Nm/4.4lbin; extension with handle: 0.8Nm/7.1lbin.

Transformation of direct operating version into door coupling type:



## Certifications and compliance

Certifications obtained:

Type	cULus according to UL508 / CSA C22.2 n°14	cULus according to UL98 / CSA C22.2 n°4	EAC
GAX10 11A - GAX10 11C	●	—	●
GAX11 10EA	●	—	●
GAX12 10EA	●	—	●
GAX31 A - GAX31 C	●	—	●
GAX32 A - GAX32 C	—	●	●
GAX33 A - GAX33 C	●	—	●
GAX34 A - GAX34 C	—	●	●
GAX50 00 - GAX60 00	●	—	●
GAX50 01 - GAX60 01	—	●	●

● Certification obtained.

Compliant with standards: IEC/EN 60947-1, IEC/EN 60947-3, IEC/EN 60947-5-1, UL508, UL98, CSA C22.2.

## Strokes of GA poles (main poles with auxiliary contacts)

	Travel 0→1	0°	30°	60°	90°
GA016A/C...GA040A/C - GA063SA Main poles				60°	
GAX10 11A - GAX10 11C Auxiliary contacts (1NO+1NC)				60°	
	NO				
	NC				
GAX11 10EA Auxiliary contact (1EB - NO early-break with respect to main poles)		40°			
	Travel 0→1		60°		
	Travel 1→0			70°	
GA030A/C and GA063A/C...GA125A/C, GA160A Main poles				55°	
GAX10 11A - GAX10 11C Auxiliary contacts (1NO+1NC)				45°	
	NO				
	NC				
GAX12 10EA Auxiliary contact (1EB NO early-break with respect to main poles)		25°			
	Travel 0→1		55°		
	Travel 1→0			65°	

OFF ON

## Strokes of GA...D types (main poles and auxiliary contacts)

	Corsa 0→1	0°	30°	60°	90°
GA040 D Main poles				60°	
GA042 040D simultaneous closing fourth -pole add on				60°	
GAX10 11A Auxiliary contacts (1NO+1NC)				60°	
	NO				
	NC				
GAX11 10EA auxiliary contact (1EB NO early-break with respect to main poles)		40°			
	Travel 0→1		60°		
	Travel 1→0			70°	