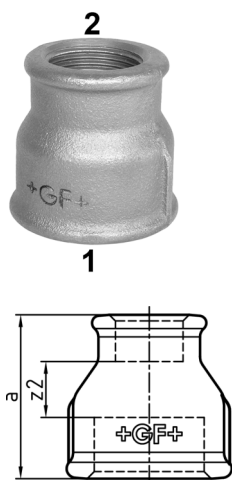


Malleable cast iron fittings

240

Socket, reducing, ISO/EN M2

ST ... these types of fittings are made from steel (galvanised finish = electroplated) and not suitable for drinking water installations. Steel parts are hexagonal instead of beaded at the end no. 1.

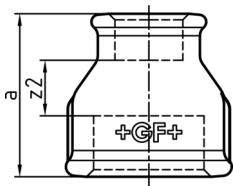


	Dim. (1-2) [inch]	EN	Code	SP	kg	a [mm]	s [mm]	z2 [mm]
ST B	1/4 - 1/8	•	770 240 115	10	0.023	27	17	10
ST G	1/4 - 1/8	•	770 240 215	10	0.024	27	17	10
ST B	3/8 - 1/8	•	770 240 116	10	0.034	30	22	13
ST G	3/8 - 1/8	•	770 240 216	10	0.036	30	22	13
ST B	3/8 - 1/4	•	770 240 117	10	0.038	30	22	10
ST G	3/8 - 1/4	•	770 240 217	10	0.039	30	22	10
B	1/2 - 1/4	•	770 240 118	10	0.083	36		13
G	1/2 - 1/4	•	770 240 218	10	0.088	36		13
B	1/2 - 3/8	•	770 240 119	10	0.064	36		13
G	1/2 - 3/8	•	770 240 219	10	0.067	36		13
B	3/4 - 1/4	•	770 240 120	10	0.109	39		14
G	3/4 - 1/4	•	770 240 220	10	0.114	39		14
B	3/4 - 3/8	•	770 240 121	10	0.091	39		14
G	3/4 - 3/8	•	770 240 221	10	0.096	39		14
B	3/4 - 1/2	•	770 240 122	10	0.116	39		11
G	3/4 - 1/2	•	770 240 222	10	0.121	39		11
B	1 - 3/8	•	770 240 123	10	0.141	45		18
G	1 - 3/8	•	770 240 223	10	0.149	45		18
B	1 - 1/2	•	770 240 124	10	0.171	45		15
G	1 - 1/2	•	770 240 224	10	0.175	45		15
B	1 - 3/4	•	770 240 125	10	0.185	45		13
G	1 - 3/4	•	770 240 225	10	0.192	45		13
B	1 1/4 - 3/8	-	770 240 126	20	0.204	50		21
G	1 1/4 - 3/8	-	770 240 226	20	0.211	50		21
B	1 1/4 - 1/2	•	770 240 127	40	0.242	50		18
G	1 1/4 - 1/2	•	770 240 227	40	0.251	50		18
B	1 1/4 - 3/4	•	770 240 128	40	0.248	50		16
G	1 1/4 - 3/4	•	770 240 228	40	0.254	50		16
B	1 1/4 - 1	•	770 240 129	40	0.199	50		14
G	1 1/4 - 1	•	770 240 229	40	0.207	50		14
B	1 1/2 - 1/2	•	770 240 130	40	0.213	55		23
G	1 1/2 - 1/2	•	770 240 230	40	0.230	55		23
B	1 1/2 - 3/4	•	770 240 131	40	0.230	55		21
G	1 1/2 - 3/4	•	770 240 231	40	0.240	55		21
B	1 1/2 - 1	•	770 240 132	40	0.229	55		19
G	1 1/2 - 1	•	770 240 232	40	0.248	55		19
B	1 1/2 - 1 1/4	•	770 240 133	30	0.237	55		17
G	1 1/2 - 1 1/4	•	770 240 233	30	0.255	55		17
B	2 - 1/2	•	770 240 134	25	0.326	65		28
G	2 - 1/2	•	770 240 234	25	0.337	65		28
B	2 - 3/4	•	770 240 135	25	0.369	65		26
G	2 - 3/4	•	770 240 235	25	0.381	65		26
B	2 - 1	•	770 240 136	25	0.355	65		24
G	2 - 1	•	770 240 236	25	0.368	65		24
B	2 - 1 1/4	•	770 240 137	20	0.497	65		22
G	2 - 1 1/4	•	770 240 237	20	0.512	65		22
B	2 - 1 1/2	•	770 240 138	20	0.365	65		22
G	2 - 1 1/2	•	770 240 238	20	0.386	65		22
B	2 1/2 - 1	-	770 240 139	15	0.600	74		30
G	2 1/2 - 1	-	770 240 239	15	0.610	74		30
B	2 1/2 - 1 1/4	•	770 240 140	12	0.588	74		28
G	2 1/2 - 1 1/4	•	770 240 240	12	0.611	74		28
B	2 1/2 - 1 1/2	•	770 240 141	15	0.710	74		28
G	2 1/2 - 1 1/2	•	770 240 241	15	0.731	74		28
B	2 1/2 - 2	•	770 240 142	10	0.795	74		23
G	2 1/2 - 2	•	770 240 242	10	0.818	74		23
B	3 - 1 1/2	-	770 240 143	20	0.922	80		31
G	3 - 1 1/2	-	770 240 243	20	0.950	80		31
B	3 - 2	•	770 240 144	10	0.863	80		26

table continued next page

GF Piping Systems Datasheet

valid from
9/10/09



	Dim. (1-2) [inch]	EN	Code	SP	kg	a [mm]	s [mm]	z2 [mm]	
G	3 - 2	•	770 240 244	10	0.890	80		26	
B	3 - 2 ½	•	770 240 145	15	1.030	80		23	
G	3 - 2 ½	•	770 240 245	15	1.060	80		23	
B	4 - 2	•	770 240 146	10	1.405	94		34	
G	4 - 2	•	770 240 246	10	1.432	94		34	
B	4 - 2 ½	•	770 240 147	4	1.458	94		31	
G	4 - 2 ½	•	770 240 247	4	1.385	94		31	
B	4 - 3	•	770 240 148	4	1.580	94		28	
G	4 - 3	•	770 240 248	4	1.604	94		28	

The technical data are not binding and not expressly warranted characteristics of the goods. They are subject to change. Our General Conditions of Sale apply.

Georg Fischer Piping Systems Ltd, Postfach, CH-8201 Schaffhausen/Switzerland
 Phone +41 -(0)52-631 1111
 e-mail: info.ps@georgfischer.com
 Internet: <http://www.piping.georgfischer.com>