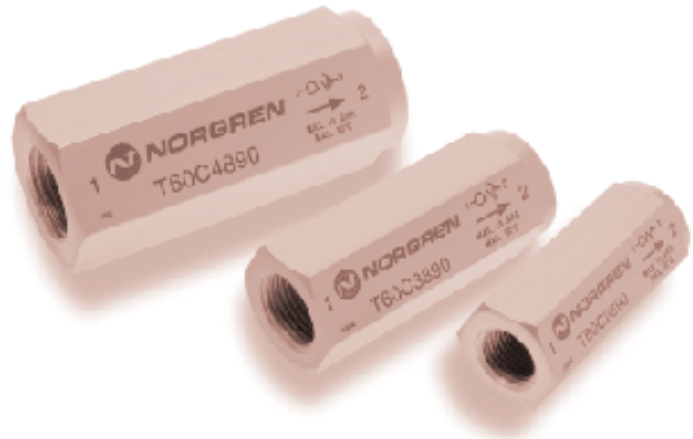
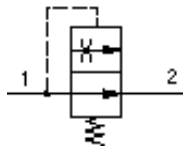


## AIR FUSES

### In-line excess flow shut-off valves

¼ to 1½" BSPP



Assists in complying with safety regulations.

Tamper proof.

Compact and safe design.

Low pressure drop.

Automatically resets after failure correction.

High corrosion resistance.

High air pressure rating.

### TECHNICAL DATA

#### Medium:

Compressed air, filtered, lubricated and non lubricated inert gases

#### Operating pressure:

Maximum 16 bar

Minimum according to hose length

#### Ambient temperature:

-20°C to +80°C.

Consult our Technical Service for use below +2°C.

Port size BSPP	Drop pressure at shut off flow (bar)	Shut off flow rate at 7 bar (dm³/s) ±10%	Flow at 7 bar Δ P 0,07 bar (dm³/s)	Model
1/4	0,14	8,3	6,5	T60C2890
1/4	0,3	14	6,5	T60C2891
3/8	0,14	19,4	13,5	T60C3890
3/8	0,3	32,2	13,5	T60C3891
1/2	0,14	32,2	23,2	T60C4890
1/2	0,3	48,3	23,2	T60C4891
3/4	0,14	48,3	43	T60C6890
3/4	0,3	80	43	T60C6891
1	0,14	92	68	T60C8890
1	0,3	128	68	T60C8891
1½	0,14	186	145	T60CB890
1½	0,3	268	145	T60CB891

BSPP: according to BS2779 and ISO 228/1.

Flow and pressure test conducted according to ISO 6358 test circuit. Mean measured flow values are provided at standard reference conditions.

## T55 SERIES

### Non-return valves

In-line

M5, 1/8, 1/4, 3/8, 1/2" BSPP, BSPT



Permit free flow of air in one direction only

Simple, reliable design

Silicone free

Low cracking pressure

### TECHNICAL DATA

#### Medium:

Compressed air, filtered, lubricated and non-lubricated

#### Operating pressure:

0,1 to 10 bar

#### Ambient temperature:

-20°C to +80°C

Consult our Technical Service for use below +2°C.

Port size	Flow factor		Cracking pressure (bar)	kg	Model Metric	BSPP		BSPT	
	C*	Cv				BSPP	BSPT		
M5	0,8	0,19	0,05	0,010	T55M0500				
1/8	2,4	0,59	0,05	0,015		T55C1800			
1/4	5,5	1,35	0,05	0,025		T55C2800	T55B2800		
3/8	9,0	2,20	0,05	0,060		T55C3800	T55B3800		
1/2	15,0	3,70	0,05	0,080		T55C4800	T55B4800		

\*C: measured in dm³/(s.bar)

## MATERIALS

Body: aluminium

O-ring: nitrile rubber

Valve: POM

Spring: stainless steel