

HS5B/HS5E Sliding Actuator

Sliding actuators allow for easy installation and adjustment.

- Angle adjustment is not required, enabling easy positioning.
- Installation is possible both vertically and horizontally, and also on any type of doors.
- Can be used on the HS5B metal head type and HS5E interlock switches.
- Safety measures can be provided easily on existing facilities.



Types

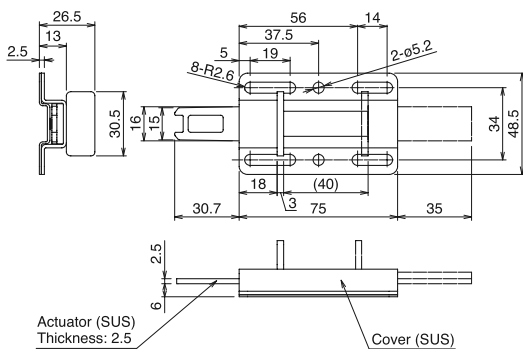
Description	Ordering Type No.
HS5B/5E Sliding Actuator	HS9Z-SH5

Note: HS5B and HS5E interlock switches are not supplied with the sliding actuators and must be ordered separately.

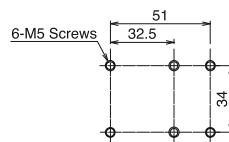
Specifications

Applicable Type	HS5B-***Z Metal Head Type Interlock Switches HS5E Interlock Switches
Weight	125g
Mechanical Durability	100,000 operations minimum
Operation Stroke	40 mm
Direct Opening Force	HS5B: 80N minimum HS5E: 90N minimum

Dimensions



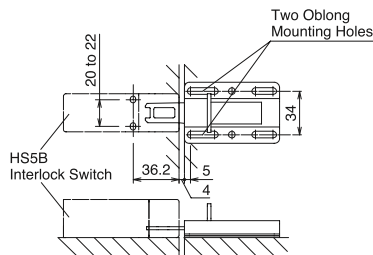
Mounting Hole Layout



All dimensions in mm.

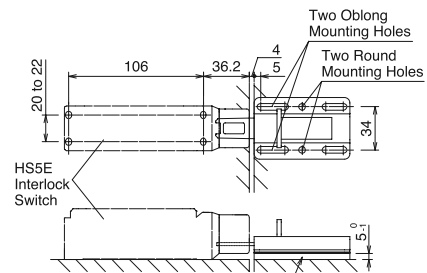
Installation

When using with HS5B-**Z interlock switch



Fasten the actuator cover on at least two oblong holes using mounting screws.

When using with HS5E interlock switch



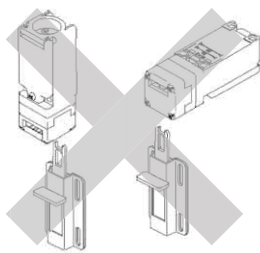
Thickness Adjustment Plate (to be provided by the user)
Recommended thickness: 5.1 mm

Fasten the actuator cover on at least two rectangular holes and two round mounting holes using mounting screws. The thickness adjustment plate requires mounting holes.

Instructions

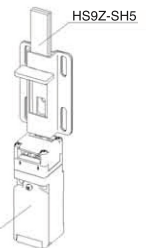
Operating Instructions

- When using the sliding actuator in a safety-related part of the system, make sure of proper operation while observing the safety standards and regulations of the relevant country or region where the actual machine/system is used. Also, perform a risk assessment before operation.
- Read the instruction sheet of the interlock switch carefully before installation or operation.
- The actuator has projections on the end. Take care not to injure hands.
- Regardless of door types, do not use the sliding actuator as a door stop.
- When the actuator is inserted to an interlock switch in the different direction from the open/close direction of the door, do not open the door with excessive force, otherwise failure or damage will be caused.
- When an operator enters the hazardous zone, take a safety measure such as using padlock hasp HS9Z-PH5 so that the operator is not trapped inside and the machine is not operated while the operator is in the hazardous zone.
- Do not install the sliding actuator as shown below, otherwise the actuator may be removed from the interlock switch due to shocks.



- Ensure to slide the sliding actuator completely. Incomplete insertion of the actuator may cause unstable contact operation of the interlock switch. Also, door may not be opened, damaging the actuator.
- Do not close the door when the actuator is slid out of the cover, otherwise the actuator may be damaged.
- When using the sliding actuator, take care so that fingers or hands are not caught between the actuator and interlock switch.

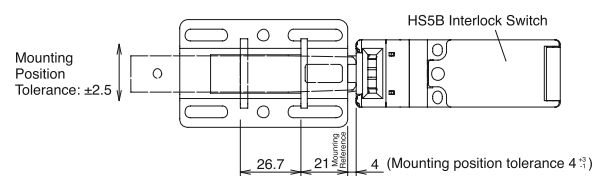
- When installing the sliding actuator over the interlock switch as shown below, do not apply a shock exceeding 100 m/s² to the actuator, otherwise the actuator may be inserted to the interlock switch and cause unintended machine operation.
- Use the sliding actuator with HS5B and HS5E interlock switches only. Do not use with other products.
- Do not modify or disassemble the sliding actuator.



Adjustment

1. Mounting Reference Position

- The mounting reference position of sliding actuator is shown below.



2. Recommended Tightening Torque of Mounting Screws

- M5 screws for mounting the sliding actuator: 4.5 to 5.5 N·m
- M4 screws for mounting the interlock switch: 1.8 to 2.2 N·m

Note: The above recommended tightening torque of the mounting screws are the values with hex socket head bolts. When other screws are used and tightened to a smaller torque, make sure that the screws do not become loose after mounting.